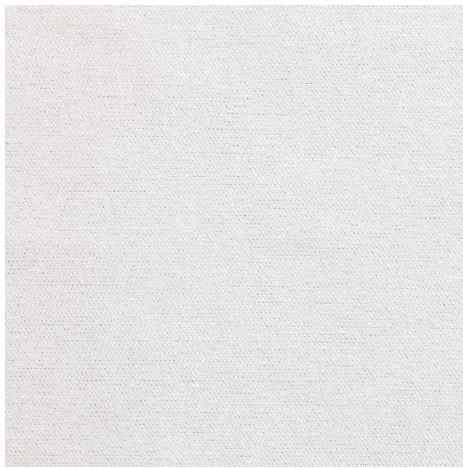


## CapSure® – VP

Sealed Edge Cleanroom Laundered 100% Polyester Knit wiper

CapSure®-VP is a sealed edge cleanroom laundered wiper that has been specially engineered for superior surface cleaning ability. A patented (#8,431,497) surface treatment allows the wiper to capture and retain particulate contamination, resulting in more efficient cleaning and reduced likelihood of cross contamination of critical surfaces. CapSure®-VP's no-run interlock knit construction provides a smooth surface texture and excellent absorbency characteristics. This combination of particulate capturing technology, absorbency and very low fibers and particles results in the superior performance required in ISO Class 3 and above environments.



### Key Attributes

- Patented surface treatment captures and retains particulate contamination, Patent #8,431,497
- 100% continuous filament polyester knit
- Sealed edge for reduced fiber contamination
- Laundered and packaged in Berkshire's ISO Class 4 cleanroom

### Benefits

- Minimal particles, fibers, ions and extractables.
- Airborne particle release 80% lower than competitive particle attraction wipers
- Captures 42 times more particles than competitive (untreated) wipers
- Retains 93% of particles captured
- Chemically compatible with IPA, Acetone and other solvents
- Immediate adsorption of liquids for efficient spill clean-up

### Applications

- Designed for use in ISO Class 3 and higher cleanroom environments
- Designed for the highest level of contamination control in critical processing applications
- Oxidation, Metallization, CVD or Photolithography processes
- Chamber cleaning and CMP processing
- Stencil and other print roll cleaning applications
- Steam autoclavable for aseptic applications
- Cleaning of medical device products
- Applying and removing cleaning and disinfecting solutions

### Other Class 3 and above wipers

- CapSure®-LP
- MicroSeal SuperSorb®
- MicroSeal SuperSorb® Lite
- UltraSeal® 3000
- MicroSeal® 1200
- ValuSeal® LP
- ValuSeal® HA
- ValuSeal® 1500

### Value Pack Option

The value pack option provides the same great performance in a more economical bulk packaging format.

[www.berkshire.com](http://www.berkshire.com)

Contact: Tel 1 800 242 7000 / 1 413 528 2602 [info@berkshire.com](mailto:info@berkshire.com)

America	Tel 1 413 528 2602	<a href="mailto:info@berkshire.com">info@berkshire.com</a>
Europe	Tel + 44 1953 562800	<a href="mailto:enquiries@berkshire.uk.com">enquiries@berkshire.uk.com</a>
SE Asia	Tel 65 6252 4313	<a href="mailto:enquiries@berkshire.com.sg">enquiries@berkshire.com.sg</a>
Japan	Tel 81 3 4530 9883	<a href="mailto:master@berkshire.co.jp">master@berkshire.co.jp</a>

## Technical Data:

Attribute		Units	Value	Test Method
Basis Weight		g/m <sup>2</sup>	123	TAPPI T-410
Caliper		μm	368	TAPPI T-411
Fibers	≥100μm	fibers/cm <sup>2</sup>	0.033	IEST-RP-CC004.4 Sec 7.1.3/Sec 7.2.2 modified
Particles	≥0.5μm	x10 <sup>3</sup> /cm <sup>2</sup>	0.19	IEST-RP-CC004.4 Sec 7.1.3/Sec 7.2.1 modified
Sorbency	Capacity	mL/m <sup>2</sup>	325	IEST-RP-CC004.4 Sec 9.1 / Sec 9.2 modified
	Efficiency	mL/g	2.6	
	Rate	seconds	1	
Non-Volatile Residue	DI Water	g/m <sup>2</sup>	0.0067	IEST-RP-CC004.4 Sec 8.1.2
	IPA	g/m <sup>2</sup>	0.0083	
Ions	Na <sup>+</sup>	ppm	0.41	IEST-RP-CC004.4 Sec 8.2.2
	K <sup>+</sup>	ppm	0.070	
	Ca <sup>++</sup>	ppm	0.031	
	Mg <sup>++</sup>	ppm	0.0069	
	Cl <sup>-</sup>	ppm	ND	

### Notes:

- Technical data represented in this table are typical values at the time of publication. These should not be used as product specifications.
- Due to differences in test methods applied and equipment utilized by different wiper manufacturers, valid product comparisons may only be obtained through side-by-side testing in the same test facility, under similar conditions
- Third party testing can be performed upon request

## Order Information:

Product	Number	Size	Shts/pk	Pks/cs	Style
CapSure®-VP	CPSVP.0708B.8	7x8" (18x20cm)	300	8	Value Pack
CapSure®-VP	CPSVP.0909.8	9x9" (23x23cm)	150	8	Stacked
CapSure®-VP	CPSVP.0909B.8	9x9" (23x23cm)	150	8	Value Pack
CapSure®-VP	CPSVP.1212.14	12x12" (30x30cm)	75	14	Stacked
CapSure®-VP	CPSVP.1212B.14	12x12" (30x30cm)	75	14	Value Pack

## Other Berkshire Products



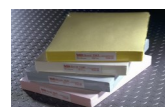
Wipers



Glove Liners



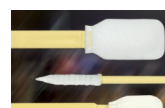
Mop Systems



Documentation Systems



Face Masks



Swabs